

SYSTEM 3 CARTRIDGE 1 STORED.
SYSTEM 3 CARTRIDGE 2 STORED.
OTTAWA COUNTY, OHIO
GENERAL ELECTION NOVEMBER 8, 1994

SYSTEM 3 CARTRIDGE 1 READING.
SYSTEM 3 CARTRIDGE 1 LOADING.
SYSTEM 3 CARTRIDGE 1 ADDED
SYSTEM 1 CARTRIDGE 1 READING.
SYSTEM 1 CARTRIDGE 1 LOADING.
SYSTEM 1 CARTRIDGE 1 ADDED

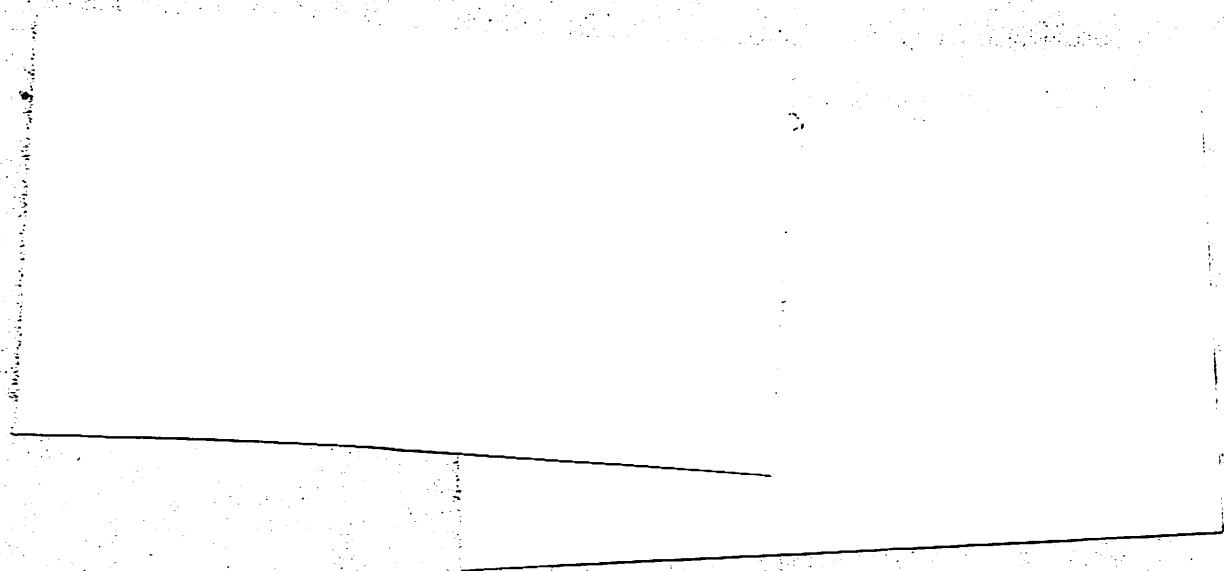
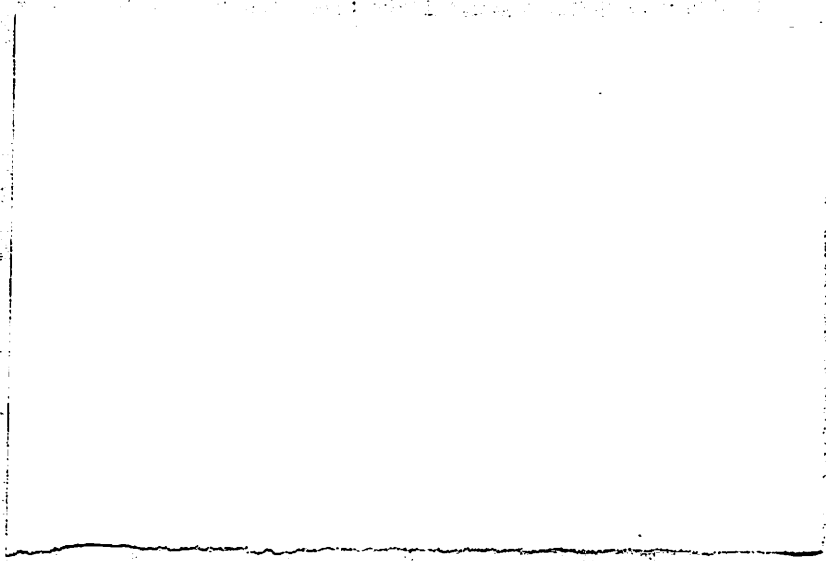
OFFICIAL

OFFICE COPY

Nancy J. Thompson Jr. Chairman
Edward S. Sull
Yvonne N. Darling
Marjorie A. Faust

RECEIVED
GENERAL INVESTIGATIVE DIVISION
FEDERAL BUREAU OF INVESTIGATION
WASHINGTON, D. C. 20535

RECEIVED
GENERAL INVESTIGATIVE DIVISION
FEDERAL BUREAU OF INVESTIGATION
WASHINGTON, D. C. 20535



OFFICE COPY

Total Number Voting 14845
Precincts Reporting 78 of 78 100.00%

OFFICIAL

GOVERNOR AND LIEUTENANT GOVERNOR		
BURCH, JR. and JONES -D	3590	25.50%
INMON and MYERS	361	2.56%
VOINOVICH and HOLLISTER -R	10114	71.85%
<i>Hatton and Wills</i>	- 0 -	
<i>Stobie and Dianna</i>	- 0 -	
ATTORNEY GENERAL		
LEE FISHER -D	5452	37.71%
BETTY MONTGOMERY -R	8990	62.18%
<i>Guy Tomplet Black</i>	- 0 -	
AUDITOR OF STATE		
JIM PETRO -R	8282	59.25%
RANDALL W. SWEENEY -D	5696	40.74%
SECRETARY OF STATE		
DAN BRADY -D	5110	36.56%
BOB TAFT -R	8864	63.43%
TREASURER OF STATE		
J. KENNETH BLACKWELL -R	6468	47.29%
EDWARD LICHT	415	3.03%
BARBARA SYKES -D	6792	49.66%
U. S. SENATOR		
MIKE DEWINE -R	6905	47.87%
JOEL HYATT -D	6233	43.21%
JOSEPH J. SLOVENEC -I	1275	8.84%
<i>Dan S. Burkhardt</i>	- 0 -	
<i>Peter Shierjung</i>	- 0 -	
U. S. REPRESENTATIVE DIST. 5		
PAUL E. GILLMOR -R	7033	74.15%
JARROD TUDOR -D	2451	25.84%
STATE REPRESENTATIVE DIST. 9		
MARCY KAPTUR -D	3747	75.49%
R. RANDY WHITMAN -R	1216	24.50%
STATE REPRESENTATIVE DIST. 53		
KATHLEEN K. DZIAK -R	5220	36.35%
DARRELL W. OPFER -D	9137	63.64%
COUNTY COMMISSIONER		
VIRGINIA R. BAHS -R	6663	46.56%
CHRIS REDFERN -D	7645	53.43%
COUNTY AUDITOR		
JAMES R. SNIDER -D	11076	100.00%
STATE BOARD OF EDUCATION DIST. 2		
MARY KARAZIM	3769	32.34%
MARTHA W. WISE	7882	67.65%

1000 000
 900 000
 800 000
 700 000
 600 000
 500 000
 400 000
 300 000
 200 000
 100 000
 0 000
 100 000
 200 000
 300 000
 400 000
 500 000
 600 000
 700 000
 800 000
 900 000
 1000 000

The following information is
 provided for your reference
 regarding the financial
 performance of the
 organization for the
 year ended 1990.

The financial statements
 are prepared in
 accordance with the
 accounting principles
 generally accepted in
 the United States of
 America.

The information
 presented herein is
 intended to provide
 a general overview
 of the financial
 position and
 performance of the
 organization.

SUPREME COURT JUSTICE COMM. 1/1/95		
DEBORAH COOK	8501	69.93%
J. ROSS HAFFEY	3655	30.06%
SUPREME COURT JUSTICE COMM. 1/2/95		
SARA J. HARPER	3176	24.78%
ALICE ROBIE RESNICK	9637	75.21%
APPEALS COURT JUDGE DIST. 6 COMM. 2/9/95		
PETER HANDWORK	10217	100.00%
AMENDMENT 1 - DEATH PENALTY APPEALS		
YES	10326	76.56%
NO	3161	23.43%
AMENDMENT 2 - CRIME VICTIMS' RIGHTS		
YES	11494	83.91%
NO	2203	16.08%
AMENDMENT 3 - HIGHER EDUCATION		
YES	8459	63.52%
NO	4856	36.47%
AMENDMENT 4 - PROHIBIT TAXES ON SODA		
YES	9620	67.33%
NO	4666	32.66%
PROP. 5 ELMORE VILLAGE LEVY - STREETS		
FOR THE TAX LEVY	354	67.04%
AGAINST THE TAX LEVY	174	32.95%
PROP. 6 ELMORE VILLAGE LEVY - WASTE COL.		
FOR THE TAX LEVY	372	70.05%
AGAINST THE TAX LEVY	159	29.94%
PROP. 7 OAK HARBOR VILLAGE ORDINANCE		
YES	686	58.83%
NO	480	41.16%
PROP. 8 ROCKY RIDGE VILLAGE LEVY		
FOR THE TAX LEVY	77	78.57%
AGAINST THE TAX LEVY	21	21.42%
PROP. 9 DANBURY TWP. LEVY - AMBULANCE		
FOR THE TAX LEVY	1120	58.76%
AGAINST THE TAX LEVY	786	41.23%
PROP. 10 HARRIS TWP. LEVY		
FOR THE TAX LEVY	654	59.61%
AGAINST THE TAX LEVY	443	40.38%
PROP. 11 PORTAGE TWP. LEVY		
FOR THE TAX LEVY	262	51.98%

	AGAINST THE TAX LEVY	242	48.01%
PROP. 12 DANBURY TWP. LEVY - POLICE			
FOR THE TAX LEVY		859	55.02%
AGAINST THE TAX LEVY		702	44.97%
PROP. 13 BENTON-CARROLL-SALEM SCHOOL D.			
FOR THE TAX LEVY		2086	61.29%
AGAINST THE TAX LEVY		1317	38.70%
PROP. 14 DANBURY SCHOOL DIST. LEVY			
FOR THE TAX LEVY		1124	57.52%
AGAINST THE TAX LEVY		830	42.47%
PROP. 15 GENDA AREA SCHOOL DIST. LEVY			
FOR THE TAX LEVY		1621	62.63%
AGAINST THE TAX LEVY		967	37.36%
PROP. 16 PORT CLINTON CITY SCHOOL DIST.			
FOR THE TAX LEVY		2576	52.38%
AGAINST THE TAX LEVY		2341	47.61%